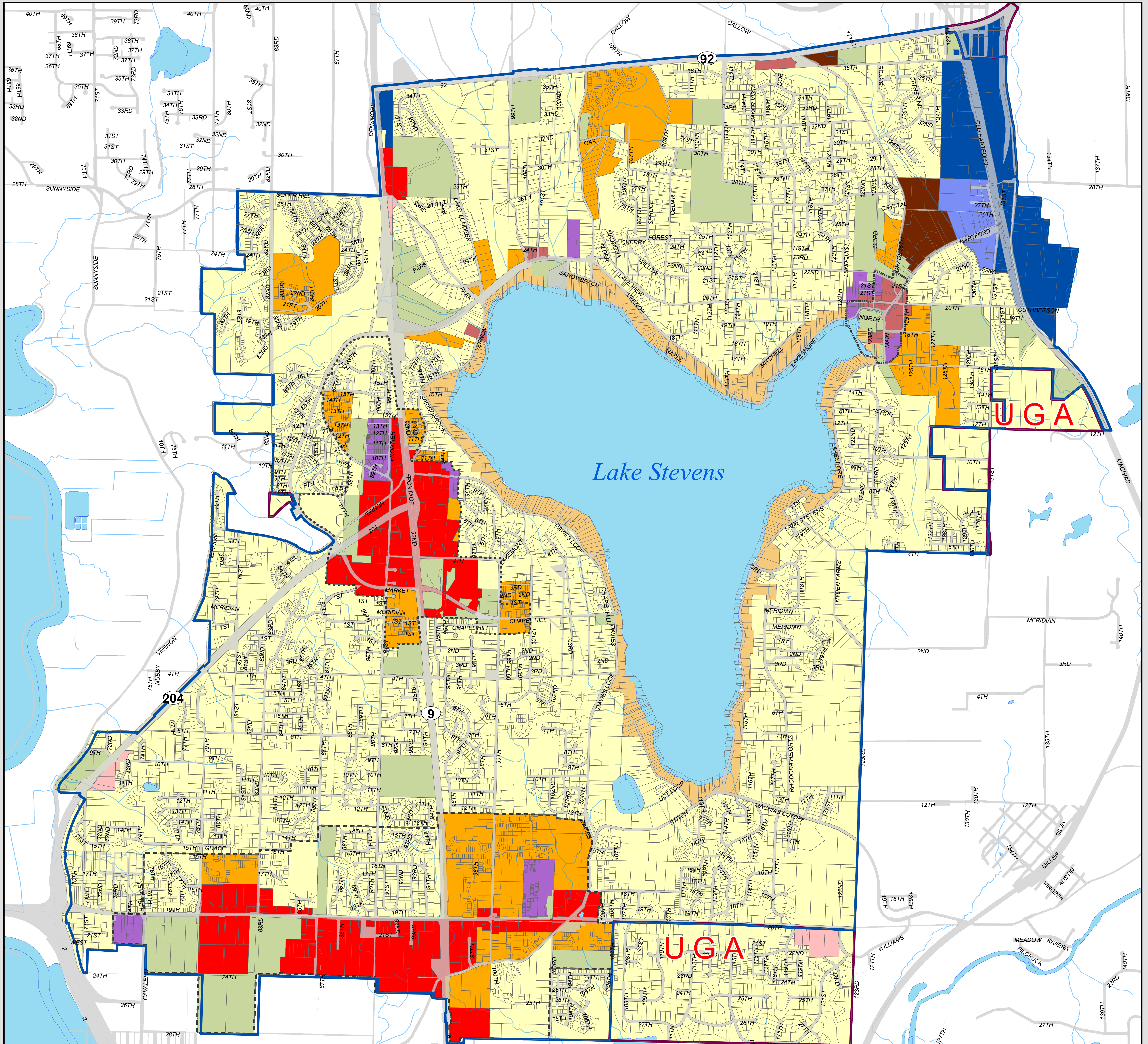




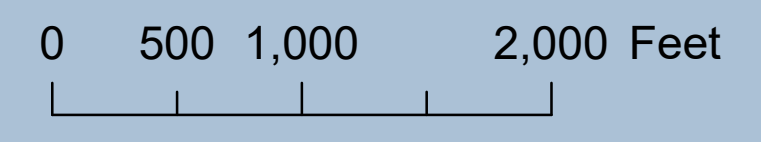
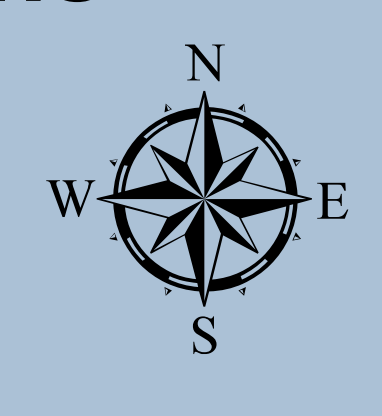
CITY OF LAKE STEVENS COMPREHENSIVE PLAN - LAND USE



2021 Comprehensive Plan Land Use Designations and UGA Predesignations

- | | | |
|--------------------------------|----------------------------------|---------------------------------|
| Land Use Designations | Local Commercial (LC) | Planned Business District (PBD) |
| Med Density Residential (MDR) | Mixed Use (MU) | Light Industrial (LI) |
| Waterfront Residential (WR) | Commercial | General Industrial (GI) |
| High Density Residential (HDR) | Downtown / Local Commerce (D/LC) | GI Development Agreement (GIDA) |
| | | Public / Semi-Public (P/SP) |

- | | | |
|----------------------|---------------------------|-----------------|
| Boundary | Subarea Boundaries | Features |
| City of Lake Stevens | 20th Street SE Corridor | Waterbody |
| Unincorporated UGA | Downtown Lake Stevens | Stream |
| Parcels | Lake Stevens Center | |
| Right-of-Way | | |



All data, information and maps are provided "as is" without warranty or any representation of accuracy, timeliness or completeness. The burden for determining accuracy, completeness, timeliness, merchantability and fitness for or the appropriateness for use rests solely on the requester. The city of Lake Stevens makes no warranties, expressed or implied as to the use of the information obtained here. There are no implied warranties of merchantability or fitness for a particular purpose. The requester acknowledges and accepts all limitations, including the fact that the data, information and maps are dynamic and in a constant state of maintenance, correction and update.

Data Sources: Snohomish County (2021), City of Lake Stevens (2021)

