

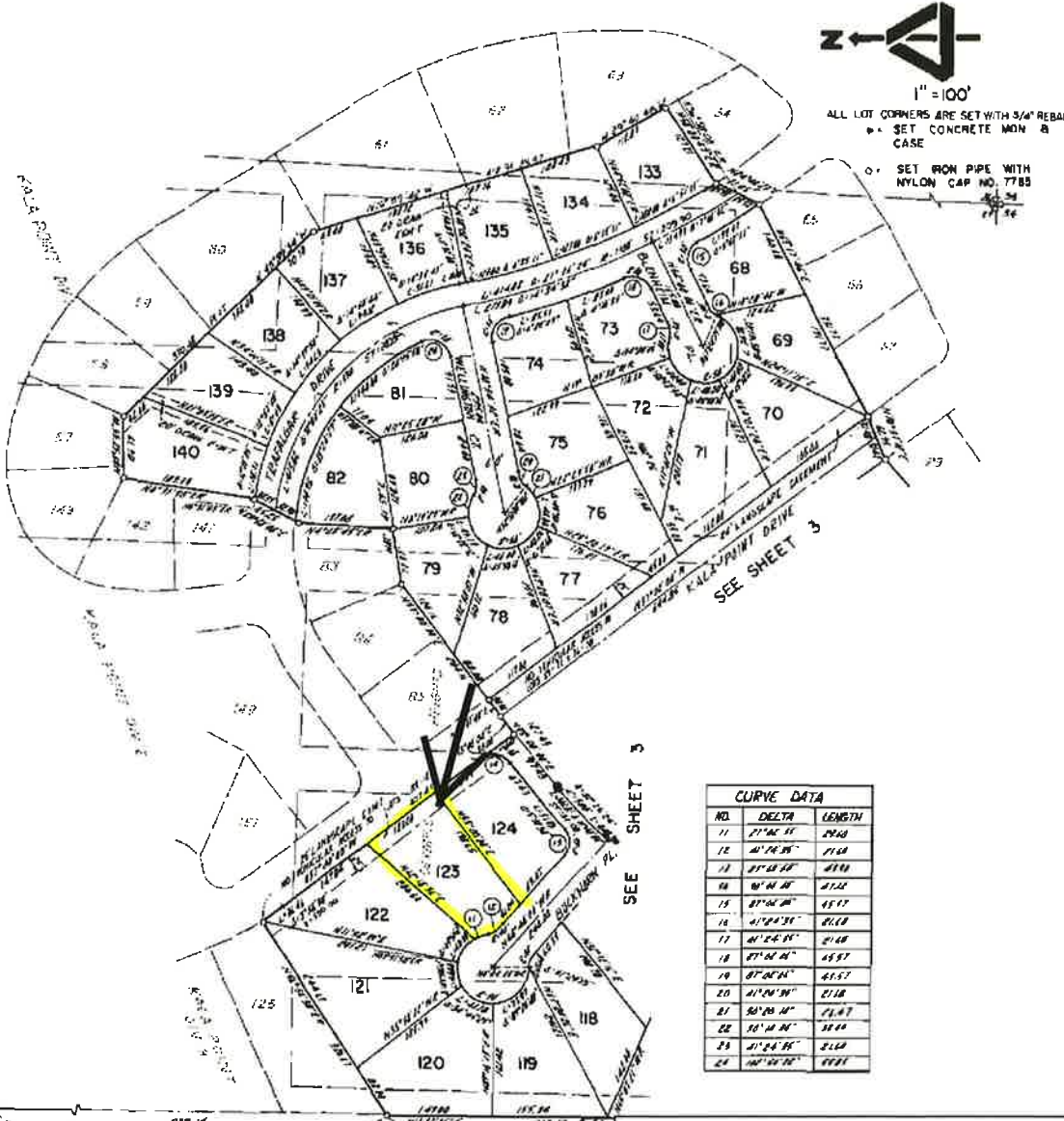
A137

KALA POINT DIVISION NO. 4

PORTIONS OF SECTIONS 26 & 27 IN T.30N., R.1W., W.M.

AND A REPLAT OF A PORTION OF OLYMPIC HEIGHTS

JEFFERSON COUNTY, WASHINGTON



1" = 100'

ALL LOT CORNERS ARE SET WITH 3/4" REBAR
 SET CONCRETE MON. B
 CASE

SET IRON PIPE WITH
 NYLON CAP NO. 7785

CURVE DATA		
NO.	DELTA	LENGTH
11	21° 06' 35"	29.60
12	40° 16' 35"	21.60
13	21° 48' 00"	43.90
14	40° 41' 00"	21.20
15	21° 06' 35"	45.57
16	41° 24' 35"	21.60
17	40° 16' 35"	21.60
18	21° 06' 35"	45.57
19	21° 06' 35"	45.57
20	41° 24' 35"	21.60
21	21° 06' 35"	21.60
22	40° 16' 35"	21.60
23	41° 24' 35"	21.60
24	40° 16' 35"	21.60

NOTICE TO POTENTIAL PURCHASERS
 Approval of this subdivision does not constitute approval of each lot for an on-site waste disposal system. Approval of site will be conditioned on building plat plans provided by owner, contours and soils on individual lots.

This sketch is provided, without a charge, for your information. It is not intended to show all matters related to the property including, but not limited to, area, dimensions, easements, encroachments or location of boundaries. It is not a part of, nor does it modify, the commitment or policy to which is attached. The Company assumes NO LIABILITY for any matter related to this sketch. Referenced should be made to an accurate survey for further information.